

OR2L8 Antibody (C-term)
Affinity Purified Rabbit Polyclonal Antibody (Pab)
Catalog # AP17638b**Specification**

OR2L8 Antibody (C-term) - Product Information

| | |
|-------------------|--------------------------------|
| Application | WB,E |
| Primary Accession | Q8NGY9 |
| Other Accession | NP_001001963.1 |
| Reactivity | Human |
| Host | Rabbit |
| Clonality | Polyclonal |
| Isotype | Rabbit IgG |
| Calculated MW | 35444 |
| Antigen Region | 207-235 |

OR2L8 Antibody (C-term) - Additional Information**Gene ID** 391190**Other Names**

Olfactory receptor 2L8, Olfactory receptor OR1-46, OR2L8

Target/Specificity

This OR2L8 antibody is generated from rabbits immunized with a KLH conjugated synthetic peptide between 207-235 amino acids from the C-terminal region of human OR2L8.

Dilution

WB~~1:1000

E~~Use at an assay dependent concentration.

Format

Purified polyclonal antibody supplied in PBS with 0.09% (W/V) sodium azide. This antibody is purified through a protein A column, followed by peptide affinity purification.

Storage

Maintain refrigerated at 2-8°C for up to 2 weeks. For long term storage store at -20°C in small aliquots to prevent freeze-thaw cycles.

Precautions

OR2L8 Antibody (C-term) is for research use only and not for use in diagnostic or therapeutic procedures.

OR2L8 Antibody (C-term) - Protein Information**Name** OR2L8**Function** Odorant receptor.

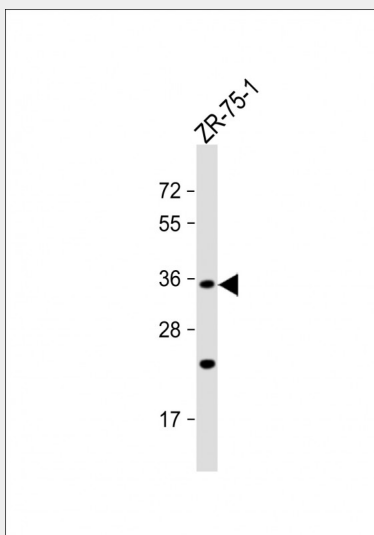
Cellular Location

Cell membrane; Multi-pass membrane protein.

OR2L8 Antibody (C-term) - Protocols

Provided below are standard protocols that you may find useful for product applications.

- [Western Blot](#)
- [Blocking Peptides](#)
- [Dot Blot](#)
- [Immunohistochemistry](#)
- [Immunofluorescence](#)
- [Immunoprecipitation](#)
- [Flow Cytometry](#)
- [Cell Culture](#)

OR2L8 Antibody (C-term) - Images

Anti-OR2L8 Antibody (C-term) at 1:1000 dilution + ZR-75-1 whole cell lysate Lysates/proteins at 20 µg per lane. Secondary Goat Anti-Rabbit IgG, (H+L), Peroxidase conjugated at 1/10000 dilution. Predicted band size : 35 kDa Blocking/Dilution buffer: 5% NFDM/TBST.

OR2L8 Antibody (C-term) - Background

Olfactory receptors interact with odorant molecules in the nose, to initiate a neuronal response that triggers the perception of a smell. The olfactory receptor proteins are members of a large family of G-protein-coupled receptors (GPCR) arising from single coding-exon genes. Olfactory receptors share a 7-transmembrane domain structure with many neurotransmitter and hormone receptors and are responsible for the recognition and G protein-mediated transduction of odorant signals. The olfactory receptor gene family is the largest in the genome. The nomenclature assigned to the olfactory receptor genes and proteins for this organism is independent of other organisms.

OR2L8 Antibody (C-term) - References

Malnic, B., et al. Proc. Natl. Acad. Sci. U.S.A. 101(8):2584-2589(2004)